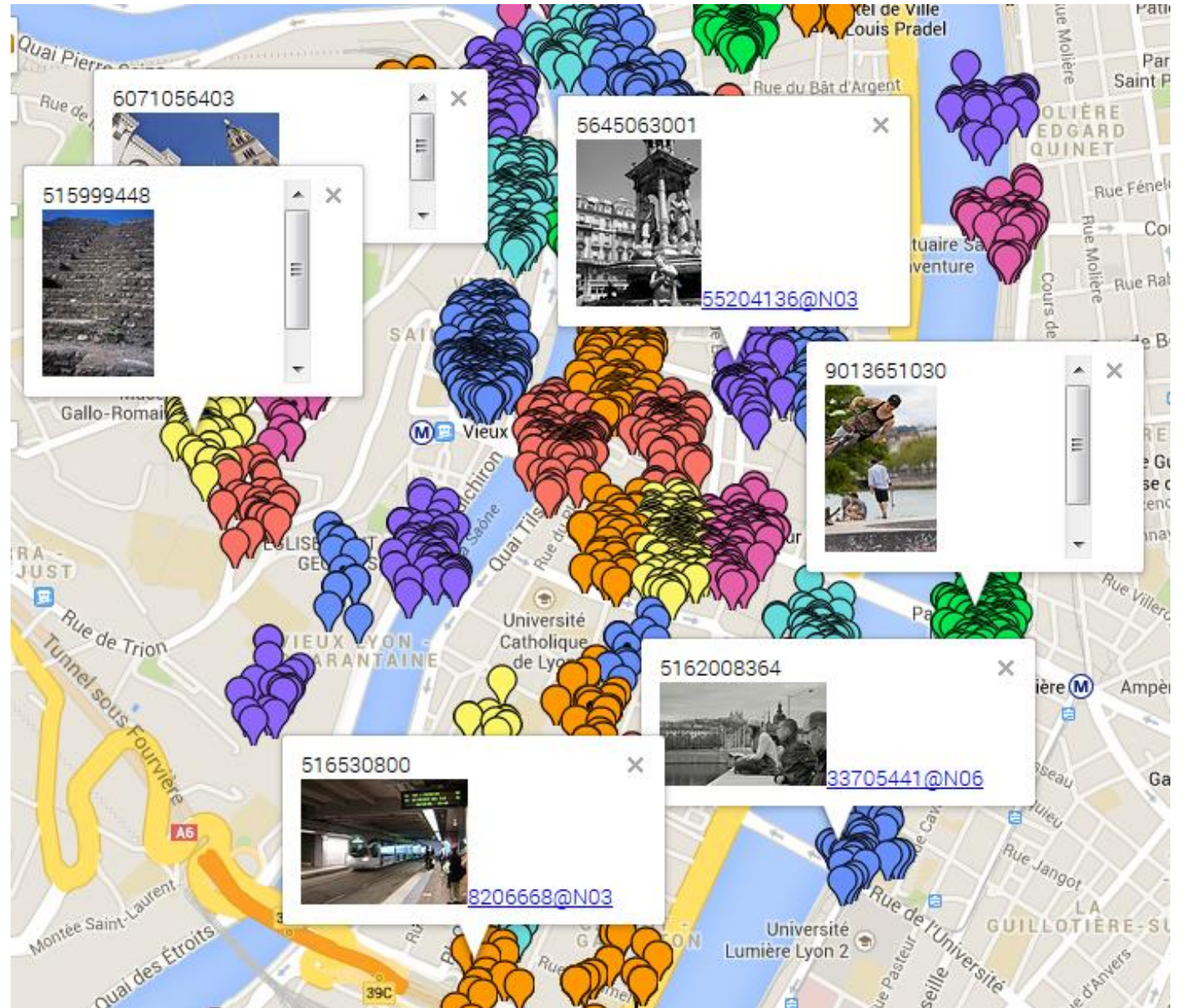


# A first flavor

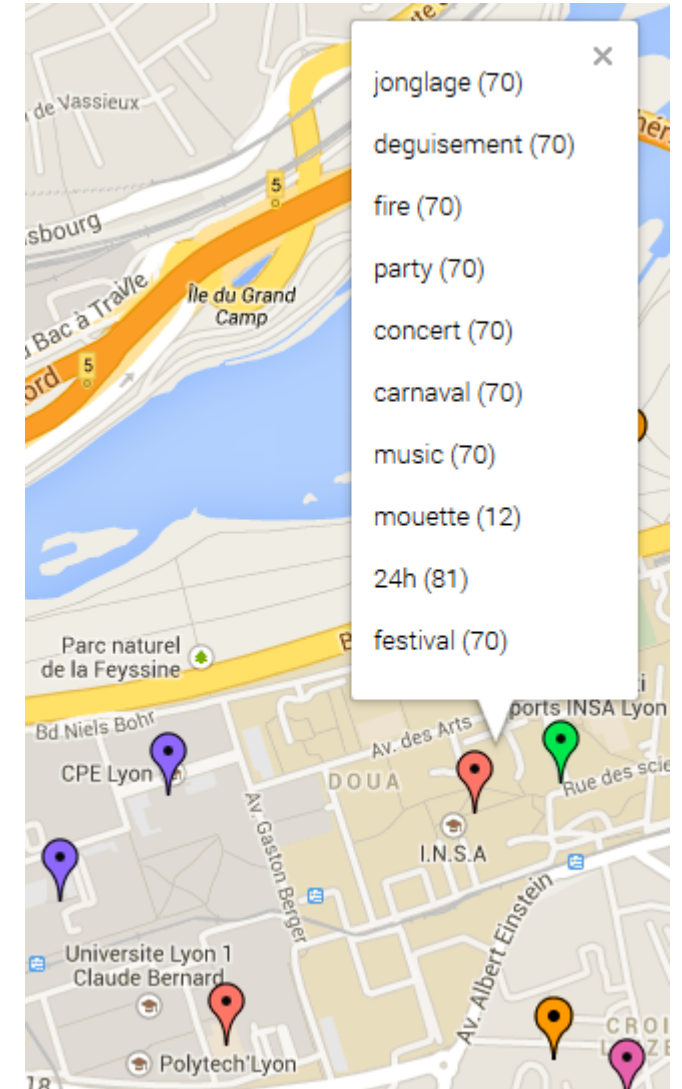
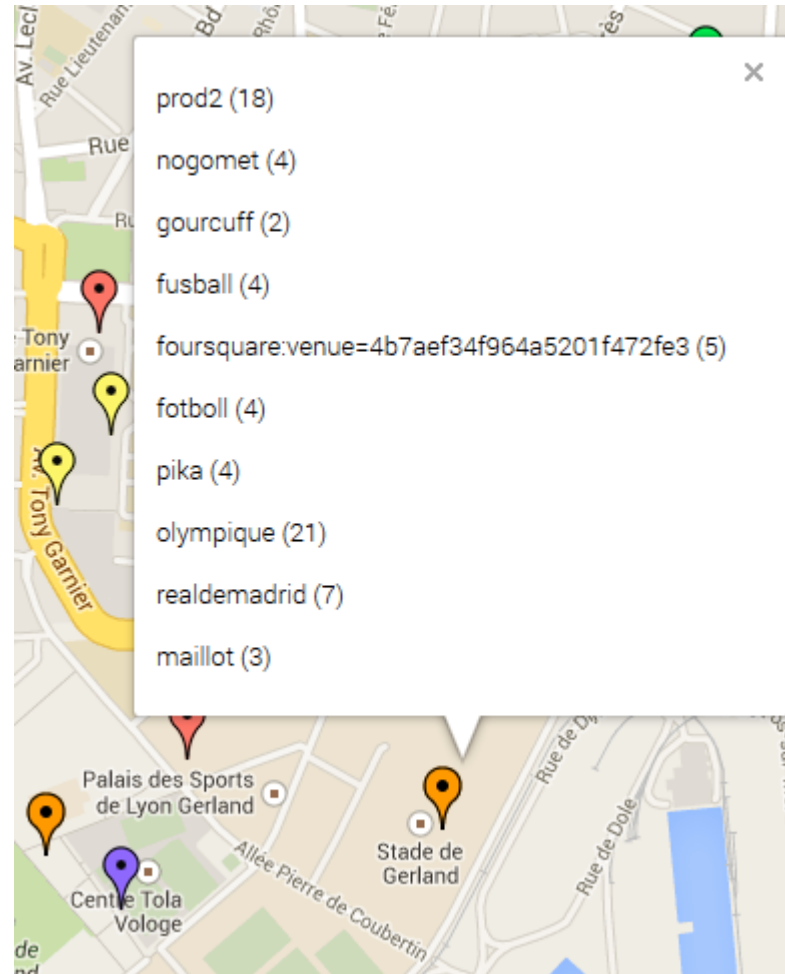
- Points of interest denote parks, touristic places, transportation facilities, museum,...



# A first flavor

- ROI can be described using frequent tag sets, discriminant for each POI
- e.g. use media tags and description, query google places API
- Some POI are constant in time, other are event-specific

Need for streaming analysis, incremental POI updates, ...



# A first flavor

- Semantic trajectories can be built for single users (or aggregates)
- Single users may not have usable trajectories
- Aggregates require usable dimension to describe users (sex, age, ...)

Before mining such trajectories, we need data 😊

