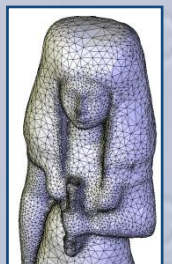
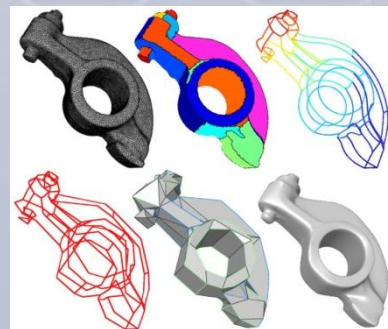
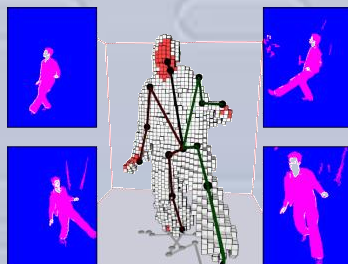
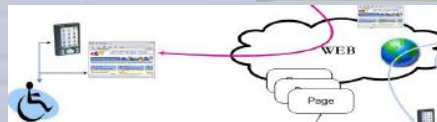
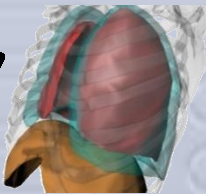
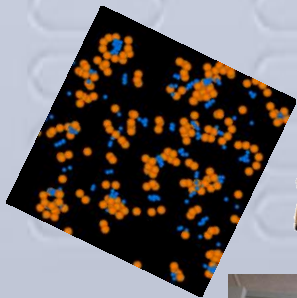
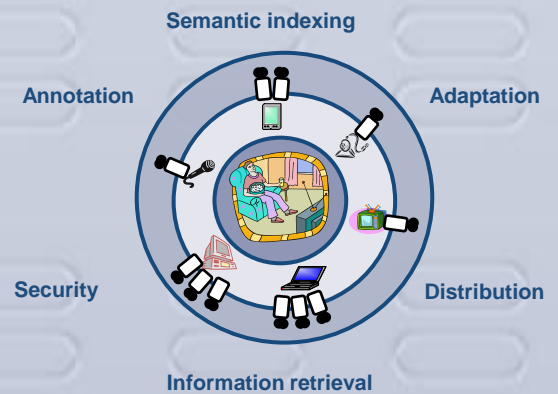
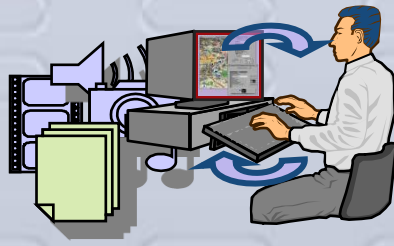
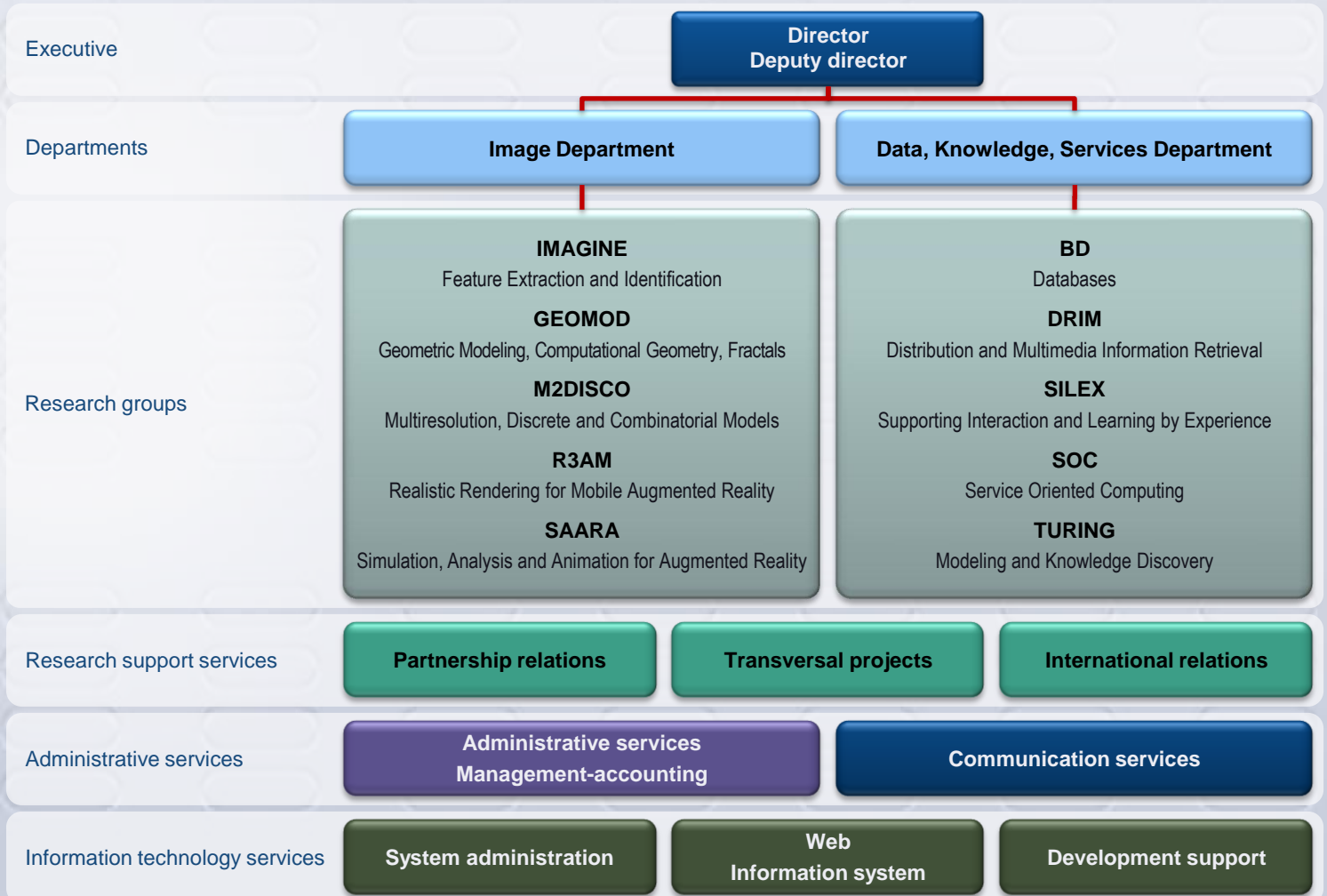


- LIRIS is a computer science laboratory where research activities are within two departments: “Image” and “Data, Knowledge and Services”.
- The **Image** department has three major research themes:
  - analysis and geometric modeling for 3D objects;
  - simulation, realistic rendering, and augmented reality ;
  - information extraction and object recognition.
- The **Data, Knowledge and Services** department has two major research themes:
  - knowledge discovery;
  - data and services engineering.
- LIRIS performs innovative research in these research themes, while at the same time contributing to the development of applications that have a potential impact on society. The focus is on culture and heritage and has ramifications in human and social sciences and health.



- 5 institutions: CNRS (UMR5205), INSA de Lyon, Université Lyon 1, Université Lyon 2, ECL
- 3 sites: Villeurbanne – Bron – Ecully
- 274 members, including 109 permanent members
- An average of 30 defended Ph. D. thesis per year
- National and international scientific reputation

# Organization Chart



## Research areas

- Analysis and geometric modeling for 3D objects (multiresolution & graphs, discrete geometry, computational geometry)
- Simulation, realistic rendering, and augmented reality
- Images, videos, documents : information extraction, object recognition
- Knowledge discovery (data mining, complex systems modeling, knowledge engineering)
- Data and services engineering (security and privacy; modeling, integration and retrieval, service composition)

## Know-how and application areas

- For digital entertainment (video games, animating cinema, multimedia data processing...)
- For biology and health (data mining, analysis and modeling of complex systems, computation grid for medical imaging...)
- For culture and heritage (digital libraries, digitization of old documents, efficient storage, 3D virtual museums...)
- For ambient intelligence (pervasive systems, sensor networks, smart video surveillance, secured communicating objects...)

## Contacts

- Director  
**Atilla Baskurt** (atilla.baskurt@liris.cnrs.fr)
- Deputy director  
**Mohand-Said Hacid** (mohand-said.hacid@liris.cnrs.fr)
- Web site  
<http://liris.cnrs.fr>

- Administrative secretary
- Main secretary: 04 72 43 63 71
- Secretary Lyon 1 : 04.72.43.26.10
- Secretary Insa : 04.72.43.85.88
- Secretary Lyon 2 : 04.78.77.24.53
- Secretary ECL : 04.72.18.64.42